

# NetBSD

- The World's Most Portable Operating System -

## Old Iron

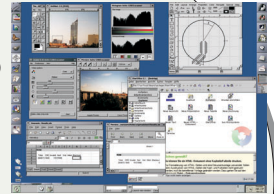


Given its roots on classic Unix-mainframes, NetBSD supports machines from the very early days of Unix. Besides various VAXen, NetBSD supports Digital Alpha- and MIPS-based systems as well as further machines from Sun, SGI, HP and IBM.

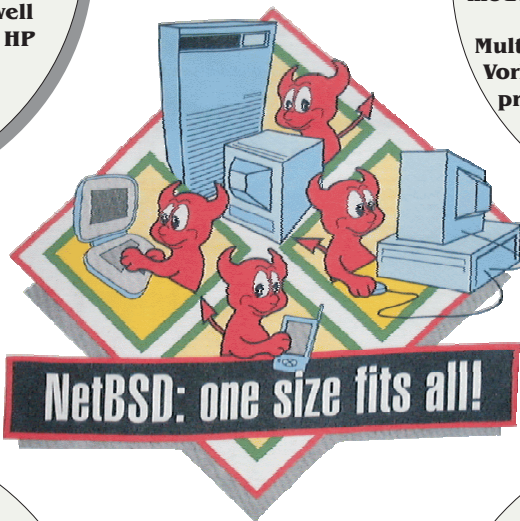
Old computers never die, they run NetBSD instead!

## Desktop

Thanks to KDE, GNOME and another 3500 third party programs, NetBSD is also state of the art in the area of modern desktops.



Multimedia with DVD, DivX, mp3 and Ogg Vorbis is available, just as there are word processors, presentation programs, spreadsheets and games. And of course scanning, faxing and printing work fine, too.



## Mobile



Support for PDAs, notebooks, subnotebooks and laptops is readily available.

USB, PCMCIA and CardBus support are available not only on i386 but also on Apple and SPARC notebooks as well as PDA and handheld devices. Mobile IP (IPv6) as well as intelligent power management support extended mobility.

## Embedded

Using NetBSD on PDAs, mobile devices, and Internet Appliances - no Problem! Besides Intel, AMD and Cyrix, NetBSD runs on MIPS, Hitachi SH3-5, PowerPC, ARM / StrongARM and Xscale.



Commercial support is available through independent consultants!



Founded 1993 as a successor of the BSD project of the University of California at Berkeley, with a focus on support of as many hardware platforms as possible, NetBSD is the world's most portable operating system today. The goal of providing a modern, Unix(-like) operating system is reached in many areas. Besides platform portability, support for many Open Source applications as well as security, stability and conformance to existing industry standards are some of the important properties of the NetBSD operating system.